

MORGAN AND MORECAMBE OFFSHORE WIND FARMS: TRANSMISSION ASSETS

Annex 3.3: Applicants' response to ExQ1 6.1.1: Phase 1 Habitat Survey Coverage



Deadline: D4
Application Reference: EN020028

Document Numbers:
MRCNS-J3303-RPS-19160
MOR001-FLO-CON-CAG-RPT-0138

Document Reference: S_D4_12

8 August 2025
F01

Document status

Version	Purpose of document	Approved by	Date	Approved by	Date
F01	Deadline 4	HK	August 2025	IM	August 2025

Prepared by:**RPS****Prepared for:****Morgan Offshore Wind Limited,
Morecambe Offshore Windfarm Ltd**

Contents

1	Introduction	1
---	--------------------	---

Figures

Figure 1: Extent of Phase 1 Habitat Survey coverage	2
Figure 2: Phase 1 Habitat survey results with aerial assessment overlay - Section 1	3
Figure 3: Phase 1 Habitat survey results with aerial assessment overlay - Section 2	4
Figure 4: Phase 1 Habitat survey results with aerial assessment overlay - Section 3	5
Figure 5: Phase 1 Habitat survey results with aerial assessment overlay - Section 4	6
Figure 6: Phase 1 Habitat survey results with aerial assessment overlay - Section 5	7
Figure 7: Phase 1 Habitat survey results with aerial assessment overlay - Section 6	8
Figure 8: Phase 1 Habitat survey results with aerial assessment overlay - Section 7A	9
Figure 9: Phase 1 Habitat survey results with aerial assessment overlay - Section 7B	10

Glossary

Term	Meaning
Applicants	Morgan Offshore Wind Limited (Morgan OWL) and Morecambe Offshore Windfarm Ltd (Morecambe OWL).
Morecambe Offshore Windfarm: Generation Assets	The offshore generation assets and associated activities for the Morecambe Offshore Windfarm.
Morecambe Offshore Windfarm: Transmission Assets	The offshore export cables, landfall, and onshore infrastructure required to connect the Morecambe Offshore Windfarm to the National Grid.
Morecambe OWL	Morecambe Offshore Windfarm Limited is owned by Copenhagen Infrastructure Partners' (CIP) fifth flagship fund, Copenhagen Infrastructure V (CI V).
Morgan and Morecambe Offshore Wind Farms: Transmission Assets	The offshore export cables, landfall, and onshore infrastructure for the Morgan Offshore Wind Project and the Morecambe Offshore Windfarm. This includes the offshore export cables, landfall site, onshore export cables, onshore substations, 400 kV grid connection cables and associated grid connection infrastructure such as circuit breaker compounds. Also referred to in this report as the Transmission Assets, for ease of reading.
Morgan Offshore Wind Project: Generation Assets	The offshore generation assets and associated activities for the Morgan Offshore Wind Project.
Morgan Offshore Wind Project: Transmission Assets	The offshore export cables, landfall and onshore infrastructure required to connect the Morgan Offshore Wind Project to the National Grid.
Morgan OWL	Morgan Offshore Wind Limited is a joint venture between JERA Nex bp (JNbp) and Energie Baden-Württemberg AG (EnBW).

Units

Unit	Description
%	Percentage

1 Introduction

- 1.1.1.1 This note has been prepared to support the Applicants response to Examining Authority Questions Q6.1.1 contained within Applicants' Response to Examining Authority's Written Questions (ExQ1) (REP3-056).
- 1.1.1.2 The attached maps have been prepared to provide further clarity on the land parcels that were subject to Phase 1 habitat mapping 'on the ground' and those which were mapped using aerial imagery/ from adjacent land parcels/ desk-based analysis.
- 1.1.1.3 The survey coverage is presented in Figure 1.2 ('Phase 1 habitat survey coverage') in Volume 3 Annex 3.3: Phase 1 habitat, national vegetation classification and hedgerow survey technical report (document reference F3.12). However, this single figure has been updated with a series of figures presented at higher resolution to show the survey coverage overlaid on the Phase 1 habitat survey mapping, to support the conclusions within Section 1.2.2 ('limitations') of Volume 3 Annex 3.3 (document reference F3.3.3) that the Phase 1 Habitat survey coverage is considered appropriate and robust for the purposes of informing the baseline conditions reported in Volume 3 Chapter 3: Onshore ecology and nature conservation (document reference F3.3). This is on the basis that land parcels not mapped 'on the ground' represent a very small proportion of the total area of land within the Order Limits (estimated at 8.5%), and that the majority of the habitats mapped in this way are either built-up areas (e.g. residential development, gardens or hardstanding), or agricultural land.
- 1.1.1.4 **Figure 1 to Figure 9** below show the Phase 1 habitat survey mapping with the survey coverage overlaid.

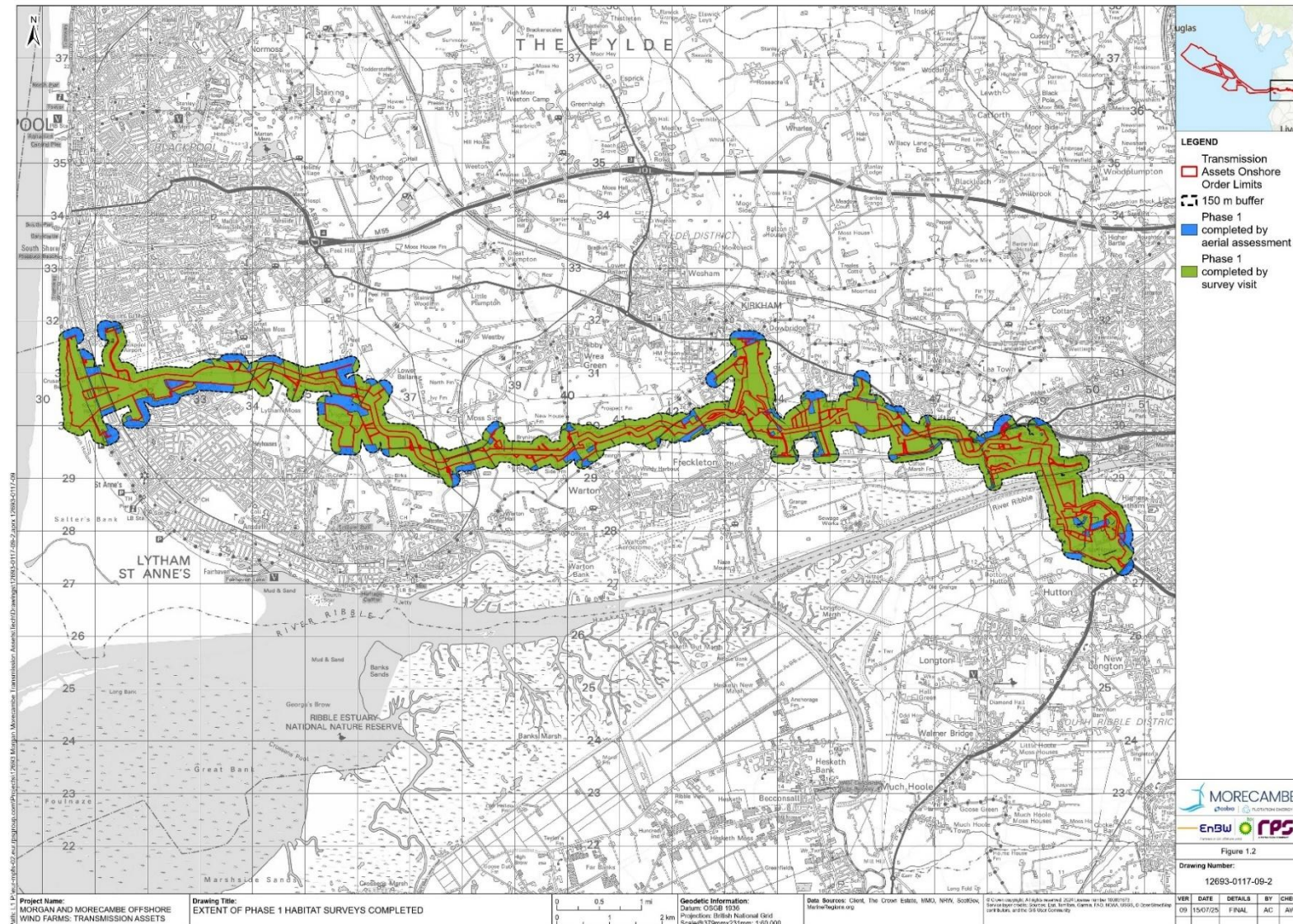


Figure 1: Extent of Phase 1 Habitat Survey coverage



Figure 2: Phase 1 Habitat survey results with aerial assessment overlay - Section 1

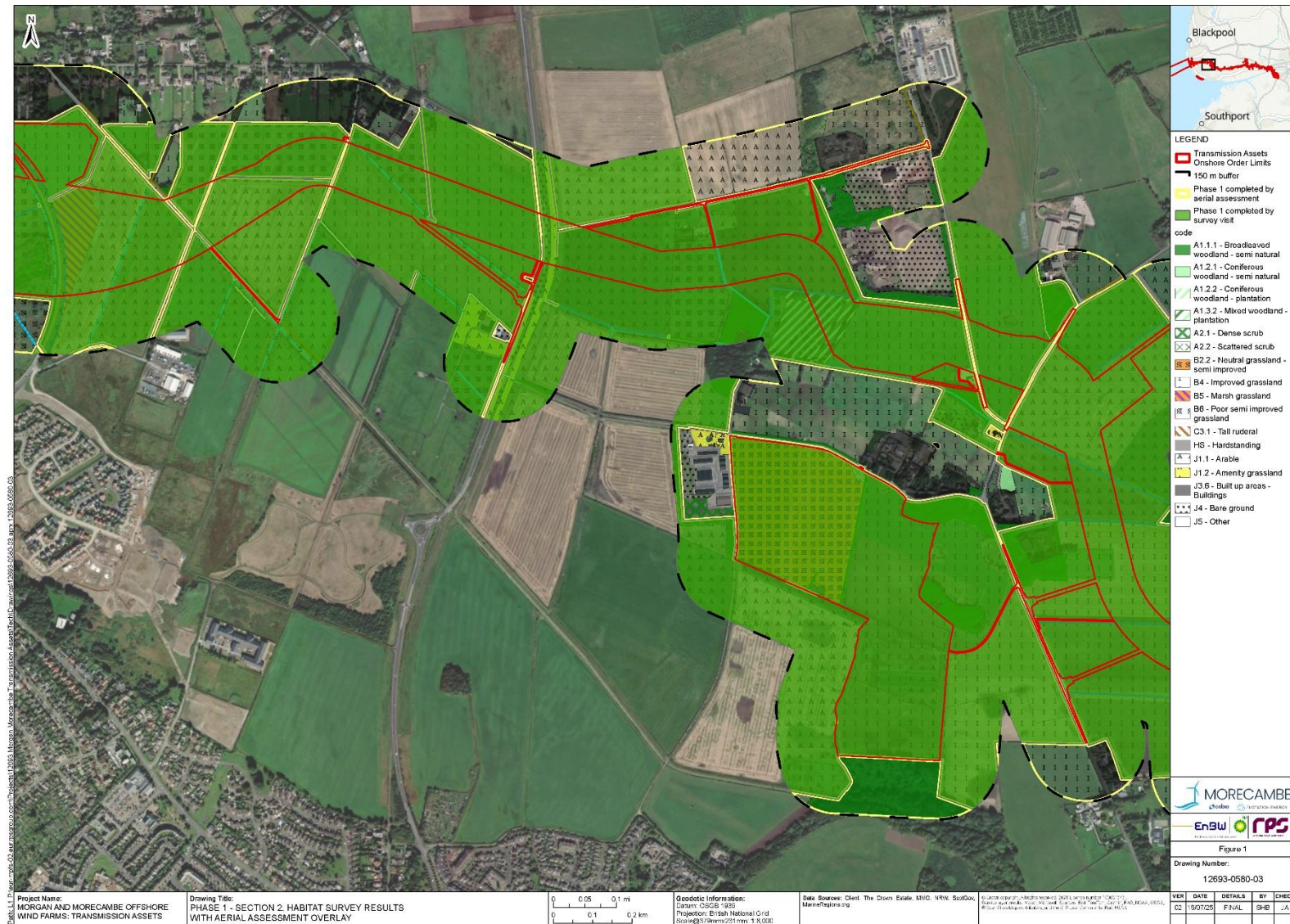


Figure 3: Phase 1 Habitat survey results with aerial assessment overlay - Section 2

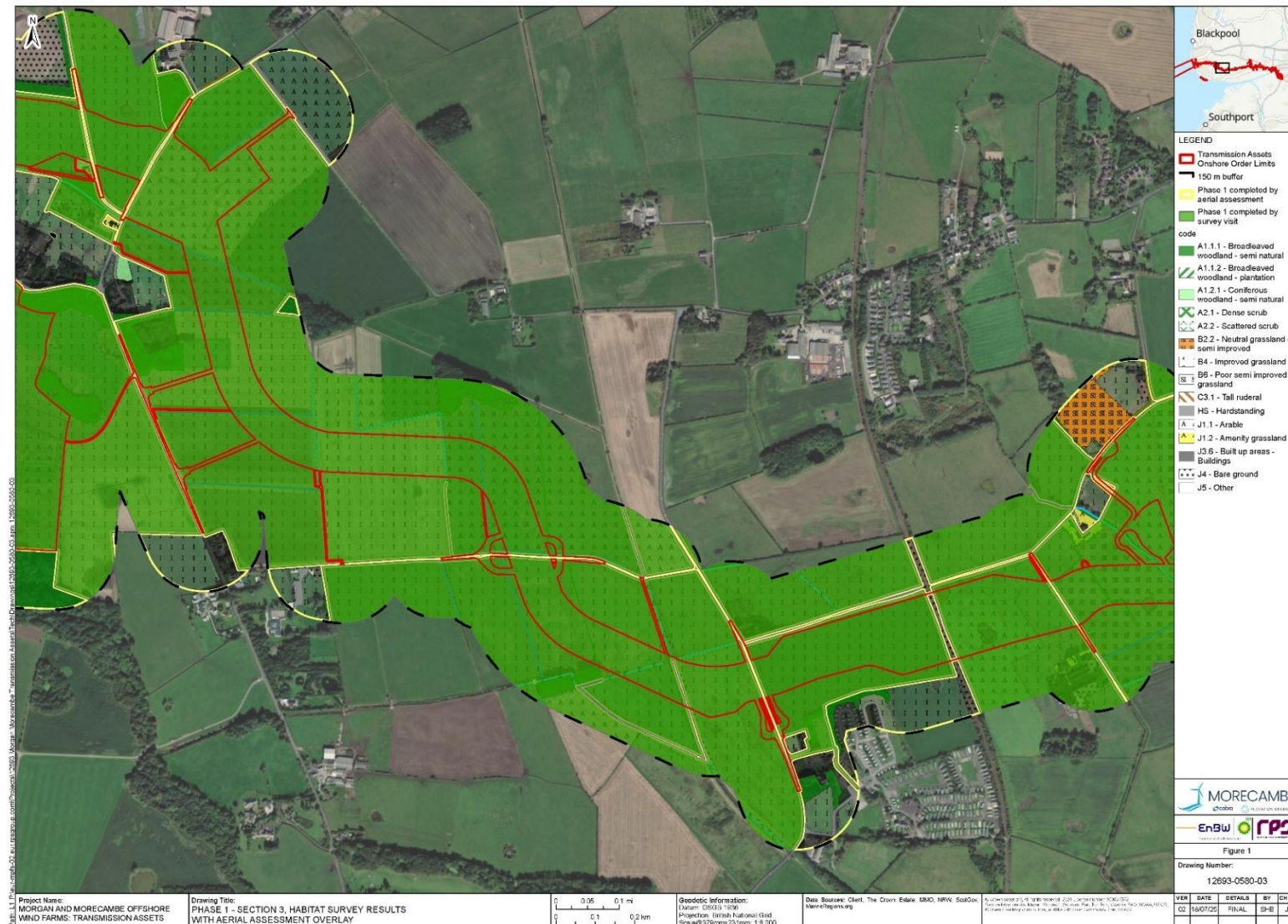


Figure 4: Phase 1 Habitat survey results with aerial assessment overlay - Section 3



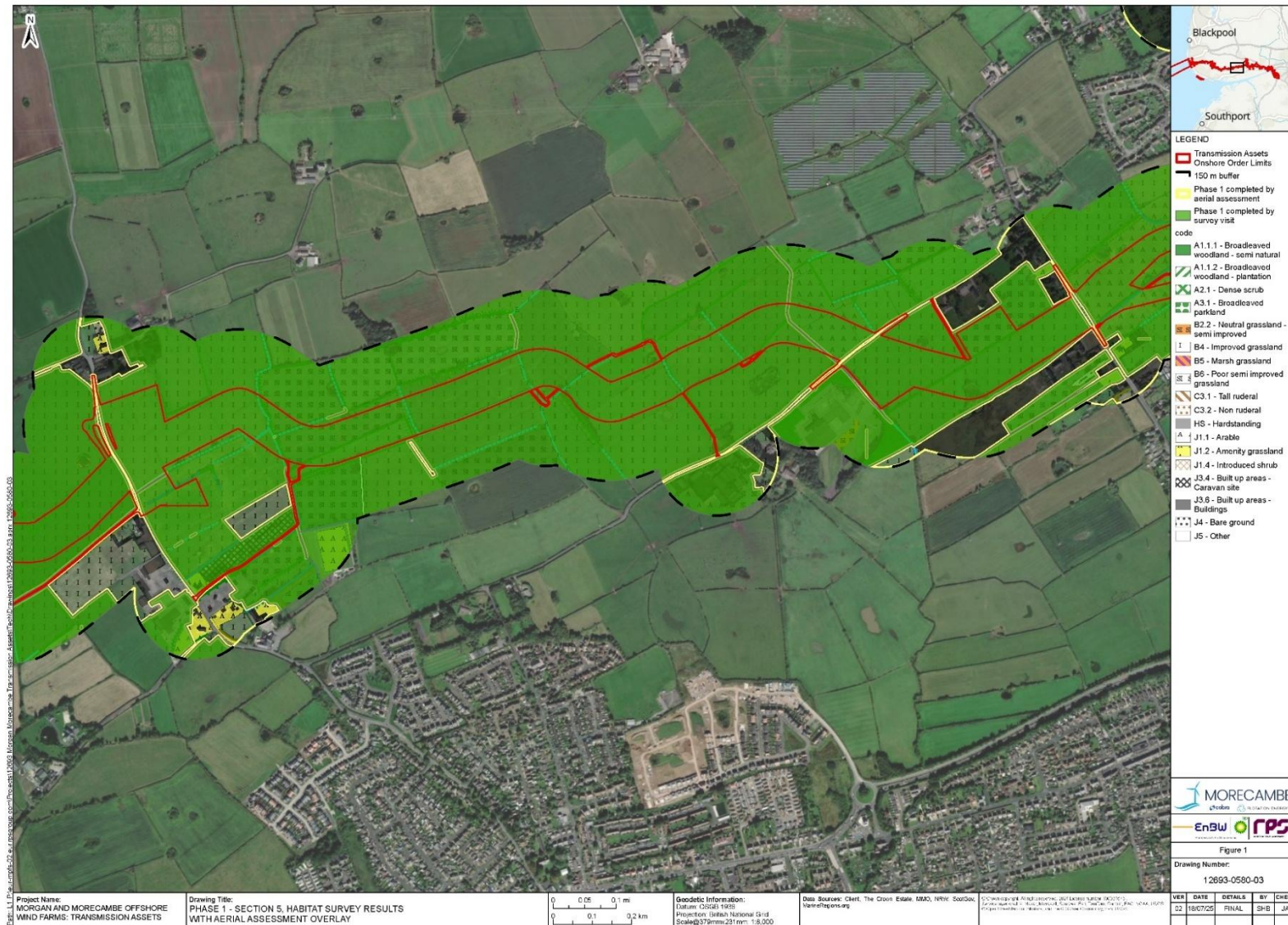


Figure 6: Phase 1 Habitat survey results with aerial assessment overlay - Section 5

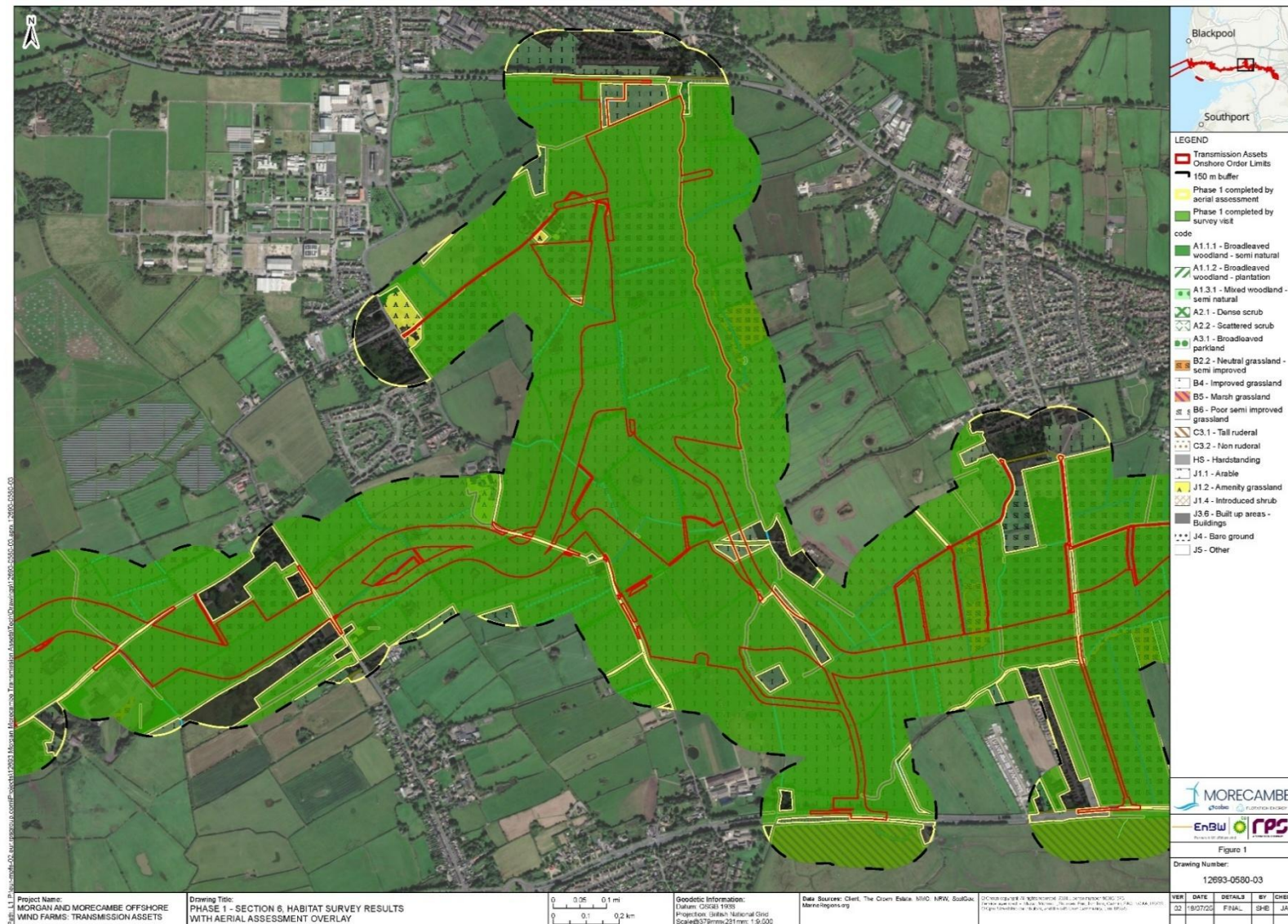


Figure 7: Phase 1 Habitat survey results with aerial assessment overlay - Section 6

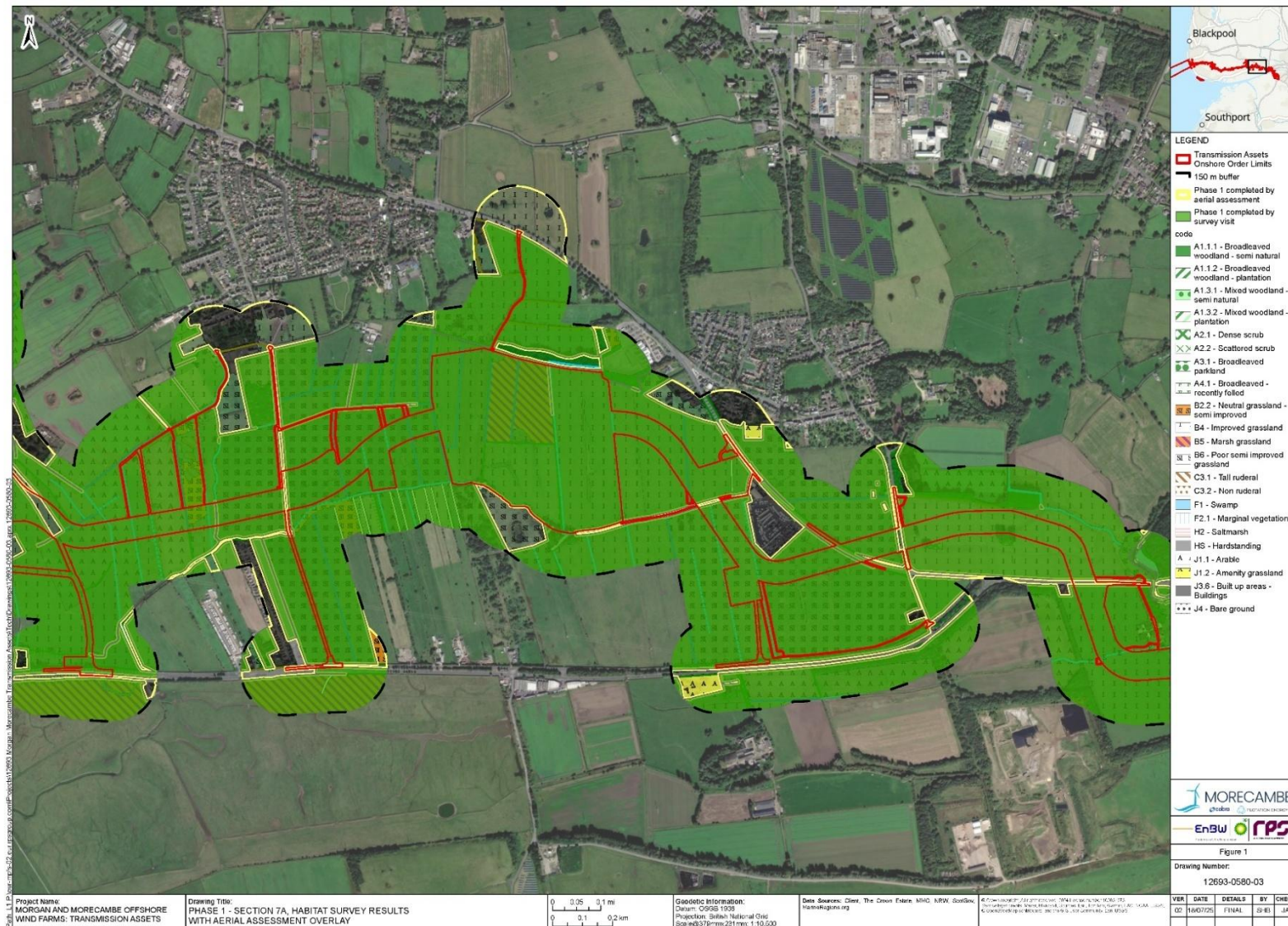


Figure 8: Phase 1 Habitat survey results with aerial assessment overlay - Section 7A

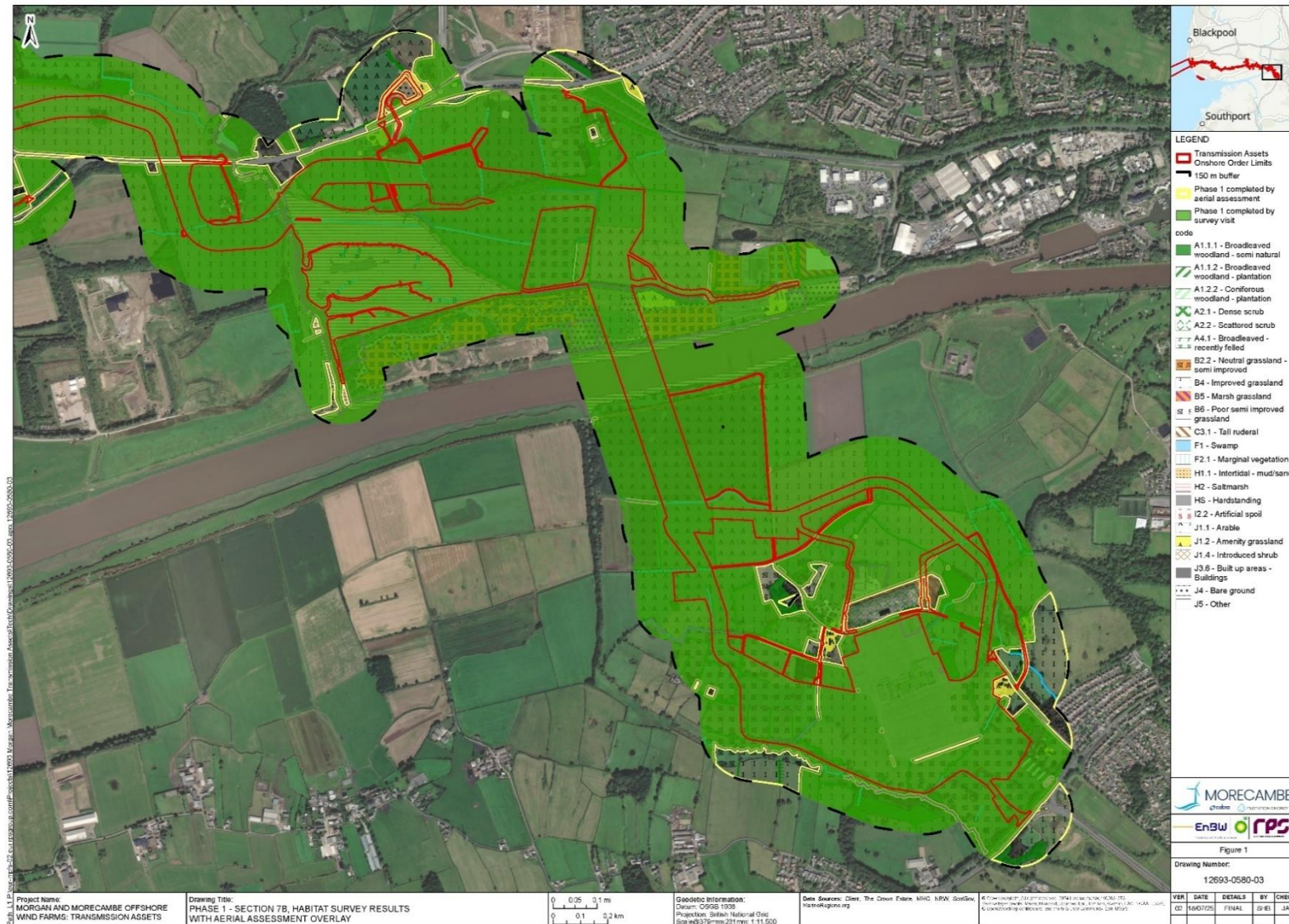


Figure 9: Phase 1 Habitat survey results with aerial assessment overlay - Section 7B